



Cert. No. LRQ 0963008

ISO 9001

spirax sarco

TI-P149-01
ST Issue 7

AE14 SG Iron

Automatic Air Vents for Liquid Systems

Description

The AE14 is part of a range of float type air vents for liquid systems. The body and cover are of SG iron and the complete unit is readily maintainable. The standard version with a Viton valve head is designated AE14. These air vents are also available with an inbuilt stop valve fitted to the inlet port designated AE14SV and AE14ESV.

Available types

AE14 Fitted with a Viton valve head (standard version).

AE14E Fitted with an EPDM valve head.

AE14S Fitted with a stainless steel valve head.

AE14SV Fitted with a Viton valve head and stop valve.

AE14ESV Fitted with EPDM valve head and stop valve.

Standards

These products fully comply with the requirements of the European Pressure Equipment Directive 97/23/EC and carry the **CE** mark when so required.

Certification

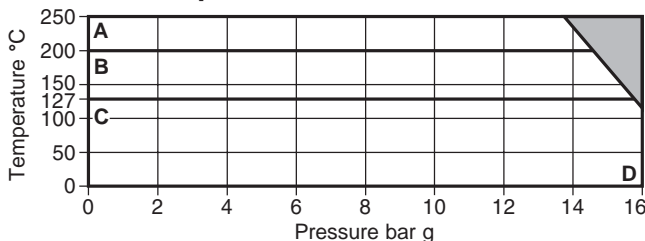
The product is available with material certification to EN 10204 2.2.

Note: All certification/inspection requirements must be stated at the time of order placement.

Sizes and pipe connections

1/2" and 3/4" screwed BSP or NPT.

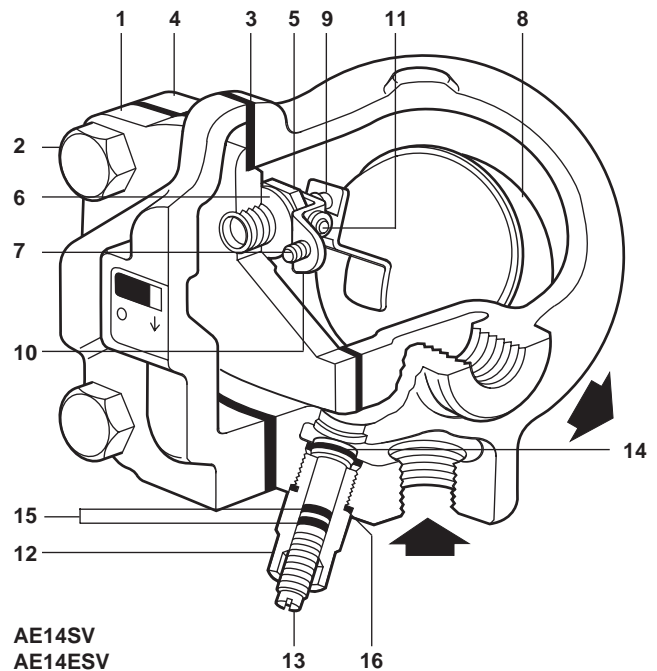
Pressure/temperature limits



The product **must not** be used in this region.

A - D AE14S
B - D AE14 and AE14SV
C - D AE14E and AE14ESV

Body design conditions		PN16
PMA	Maximum allowable pressure	16 bar g @ 110°C
TMA	Maximum allowable temperature	250°C @ 13.6 bar g
Minimum allowable temperature		0°C
PMO	Maximum operating pressure	16 bar g
TMO	Maximum operating temperature	AE14E and AE14ESV 127°C @ 15.5 bar g
		AE14 and AE14SV 200°C @ 14.5 bar g
		AE14S 250°C @ 13.6 bar g
Minimum operating temperature		0°C
ΔPMX	Maximum differential pressure	14 bar
Designed for a maximum cold hydraulic test pressure of 24 bar g		
Minimum specific gravity of liquid		0.6



AE14SV
AE14ESV

Materials

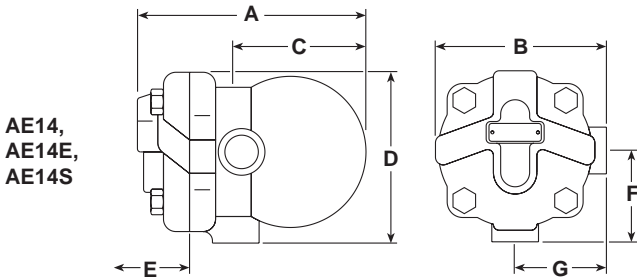
No.	Part	Material
1	Body	SG iron DIN 1693 GGG 40
2	Cover bolt	Steel BS 3692 Gr. 8.8
3	Cover gasket	Reinforced exfoliated graphite
4	Cover	SG iron DIN 1693 GGG 40
5	Main valve seat	Stainless steel BS 970 431 S29
6	Main valve seat gasket	Stainless steel BS 1449 304 S11
7	Main valve assembly screws	Stainless steel BS 6105 CI A2-70
8	Ball float and lever	Stainless steel BS 1449 304 S16
9	Valve head	AE14, AE14SV Viton
		AE14E, AE14ESV EPDM WRc 9205519
		AE14S Stainless steel AISI 440B
10	Pivot frame	Stainless steel BS 1449 304 S16
11	Pivot pin	Stainless steel
* 12	Stop valve housing	Brass BS 2874 CZ 121 3Pb
* 13	Stop valve spindle	Brass BS 2874 CZ 121 3Pb
* 14	Stop valve head	Brass BS 2874 CZ 121 3Pb
* 15	'O' rings	Synthetic rubber Fluorocarbon
* 16	Stop valve gasket	Copper BS 2870 C 101

* **Note:** Parts 12 to 16 are used for AE14ESV and AE14SV only.

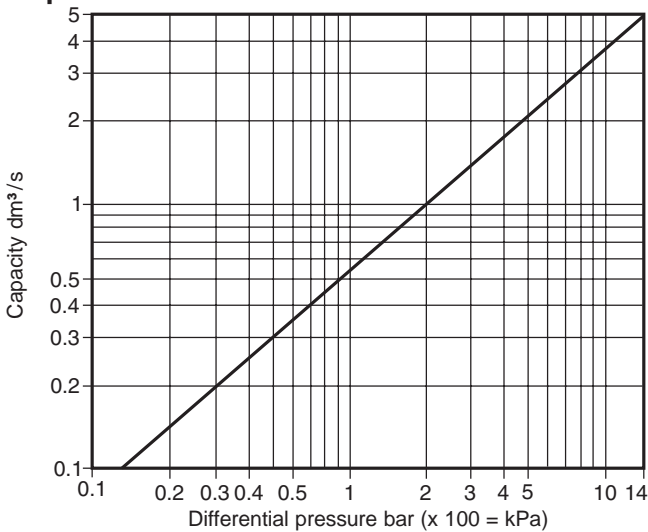
Dimensions/weights (approximate) in mm and kg

AE14, AE14E, AE14S

Size	A	B	C	D	E	F	G	Weight
1/2"	147	114	80	114	105	60	60	2.5
3/4"	147	114	80	114	105	60	60	2.5



Capacities



Safety information, installation and maintenance

For full details see the Installation and Maintenance Instructions (IM-P149-06) supplied with the product.

Disposal

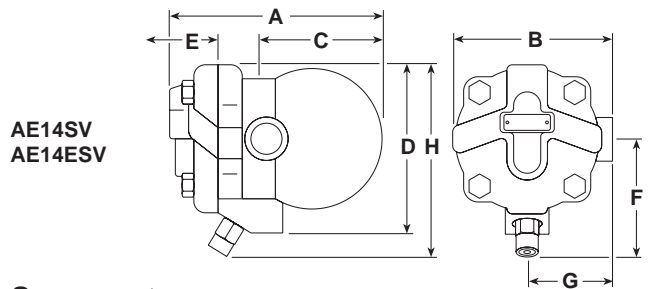
This product is recyclable. No ecological hazard is anticipated with the disposal of this product providing due care is taken.

How to order

Example: 1 off Spirax Sarco 1/2" screwed BSP AE14 automatic air vent with SG iron body and Viton valve head.

AE14ESV, AE14SV

Size	A	B	C	D	E	F	G	H	Weight
1/2"	148	114	65	129	105	76	60	147	2.7
3/4"	148	114	65	129	105	76	60	147	2.7



Spare parts

The spare parts available are shown in heavy outline. Parts drawn in broken line are not supplied as spares.

Available spares

Maintenance kit **3, 5, 6, 7** (2 off), **8, 9, 10, 11, 14, 15** (2 off), **16**
Note: Item 9 is attached to item 8 when supplied for the AE14S.

Seal kit **3, 6, 14, 15** (2 off), **16**

Valve head (not available for the AE14S) packet of 3 **9**

Note: 1 off EPDM and Viton valve head is supplied to fit as required.

How to order spares

Always order spares by using the description given in the column headed 'Available spares' and state the size and type of automatic air vent.

Example: 1 - Maintenance kit for a Spirax Sarco 1/2" AE14ESV automatic air vent.

Recommended tightening torques

Item	Part	or mm	N m
* 2	Cover bolts	17 A/F M10 x 30	47 - 50
5	Main valve seat	17 A/F	50 - 55
7	Main valve assembly screws	Pozidrive M4 x 6	2.5 - 3.0
* 12	Stop valve housing	21 A/F	30 - 35

* **Note:** Items 2 and 19 are not available as spares.

