



Cert. No. LRQ 0963008

ISO 9001

# spirax sarco

TI-P027-01  
ST Issue 13

## BSP Pressure Gauge with Syphon and Cock

### Description

Pressure gauge with 100 mm diameter dial with units marked in bar, psi and inches hg for vacuum as appropriate and having a BSP connection. The gauge is supplied with either:

Ring type syphon tube and cock or a 'U' type syphon tube and cock.

Bourdon tube gauge, constructed in accordance with DIN 16005.

For the following options, consult Spirax Sarco:

Pressure gauges with NPT connections.

A dial with MPa units is available where indicated (\*) in the 'Available pressure range' table below.

### Available pressure range

	Range	0 to 1.6 bar	0 to 23 psi
Steel	Range *	0 to 4.0 bar	0 to 53 psi
	Range *	0 to 6.0 bar	0 to 86 psi
	Range *	0 to 10.0 bar	0 to 145 psi
	Range *	0 to 16.0 bar	0 to 230 psi
Note: Where indicated (*) a dial with MPa units is available.	Range *	0 to 25.0 bar	0 to 360 psi
	Range	0 to 40.0 bar	0 to 580 psi
	Range	-1 to 1.5 bar	30" Hg to 20 psi
	Range	-1 to 3.0 bar	30" Hg to 40 psi
	Range	-1 to 5.0 bar	30" Hg to 70 psi
	Stainless steel	Range	0 to 4.0 bar
Range		0 to 10.0 bar	0 to 145 psi
Range		0 to 16.0 bar	0 to 230 psi
Range		0 to 25.0 bar	0 to 360 psi

### Standards

The product fully complies with the requirements of the Pressure Equipment Directive 97/23/EC.

### Certification

A certificate of conformity is available as standard for this product. A calibration certificate is available by special order at extra cost.

### Sizes and pipe connections

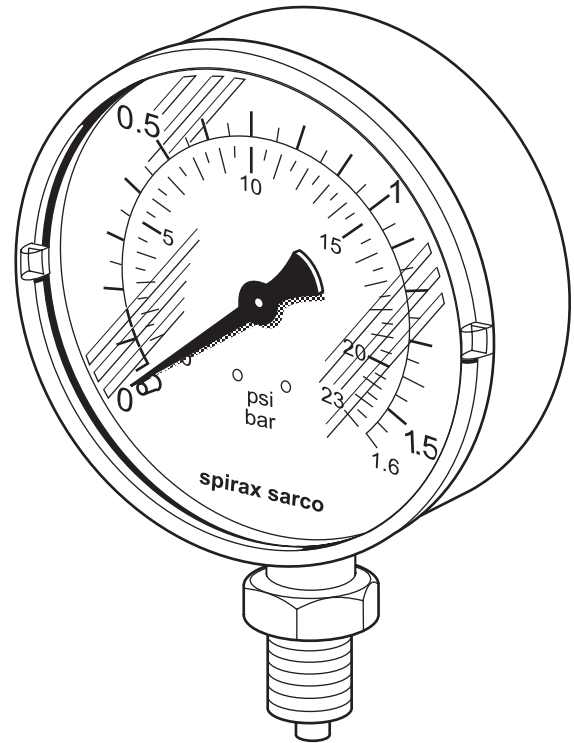
Pressure gauge		3/8" BSP male	(BS 2779)
Gauge cock	Gauge end	3/8" BSP female	(BS 2779)
	Syphon end	3/8" BSP female parallel	(BS 21)
Ring/'U' syphon	Cock end	3/8" BSP male taper	(BS 21)
	Process end	3/8" male parallel	(BS 21)

### Materials - Steel

Part	Material	
Gauge	Case	Pressed steel
	Glass	Snap fit perspex
	Bourdon tube	CuSh 8 (92% Cu 8% Zn)
Ring and 'U' syphon	Mild steel tube BS 1387 heavy grade	
Gauge cock	Body	Brass
	Handle	Phenolic

### Materials - Stainless steel

Gauge	Case	Stainless steel
	Glass	Snap-fit perspex
	Bourdon tube	Stainless steel 316TI
'U' syphon		Stainless steel
Gauge cock	Use a Spirax Sarco 3/8" M10S4	Stainless steel



### Pressure/temperature limits

Maximum design conditions	Full scale reading
PMA Maximum allowable pressure	Full scale reading
TMA Maximum allowable temperature of gauge	217°C
<b>Note:</b> Either a 'U' or a ring syphon must be fitted to achieve this.	
Minimum allowable temperature	-40°C

PMA	Range †	1.5 bar	20 psi
	Range	1.6 bar	23 psi
PMO Maximum operating pressure	Range †	3 bar	40 psi
	Range	4 bar	53 psi
Please note:	Range †	5 bar	70 psi
	Range	6 bar	86 psi
1. Where indicated (†) these units are available as compound gauges down to full vacuum.	Range	10 bar	145 psi
	Range	16 bar	230 psi
2. For compressed air and steam services the maximum operating pressure for this product is 21 bar g.	Range	25 bar	360 psi
	Range	40 bar	580 psi
Maximum ambient temperature			60°C

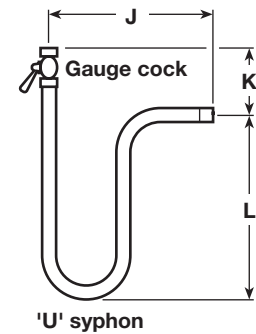
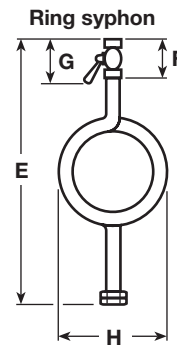
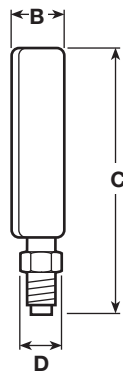
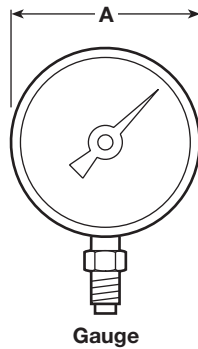
Local regulations may restrict the use of this product to below the conditions quoted.

In the interests of development and improvement of the product, we reserve the right to change the specification without notice.

© Copyright 2006

## Dimensions/weights (approximate) in mm and kg

Gauge					Ring syphon					U' syphon					
A	B	C	D	Weight	E	F	G	H	Weight Syphon	Weight Cock	J	K	L	Weight Syphon	Weight Cock
100	29	137	22 A/F	0.43	321	35	80	116	0.94	0.21	167.5	61.5	136.5	0.59	0.21



## Safety information, installation and maintenance

For full details see the Installation and Maintenance Instructions (IM-P027-02) supplied with the product.

### Installation note:

As with all instrumentation, the Spirax Sarco pressure gauge is a delicate measuring device and care has to be taken in its installation and use if it is to remain reliable.

It is recommended that all gauges are fitted with a gauge cock to assist when calibration or maintenance is necessary. When used on steam or other hot gases, gauges **must** be protected from heat by the use of a 'U' syphon or ring syphon tube and gauge cock. The syphon pipe should be primed with water prior to fitting the gauge. Care should be taken if the installation is exposed to frost as gauges can burst.

### Disposal:

The product is recyclable. No ecological hazard is anticipated with the disposal of this product providing due care is taken.

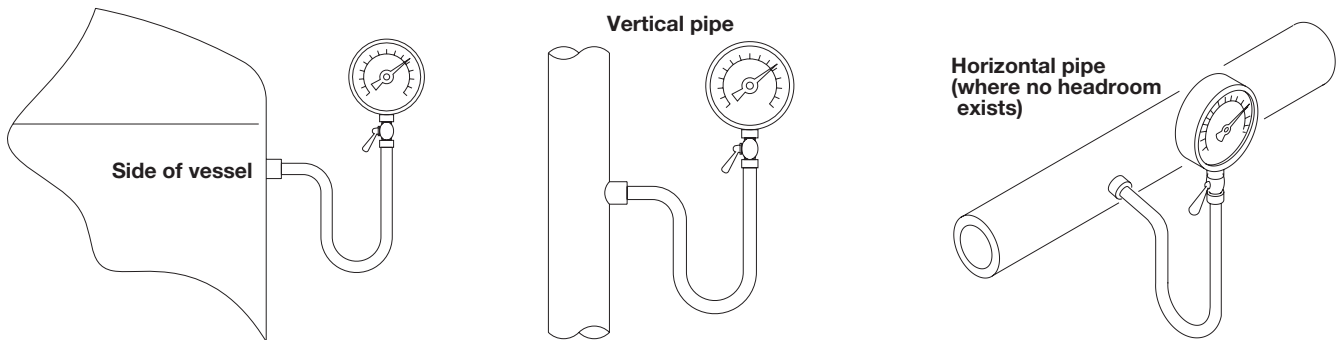
## How to order

**Example:** 1 off Spirax Sarco 3/8" pressure gauge with a pressure range of 0 - 10 bar and having screwed BSP connections.

## Spare parts

There are no spare parts available for Spirax Sarco pressure gauges.

### Typical uses of a 'U' syphon and gauge



### Typical uses of a ring syphon and gauge

